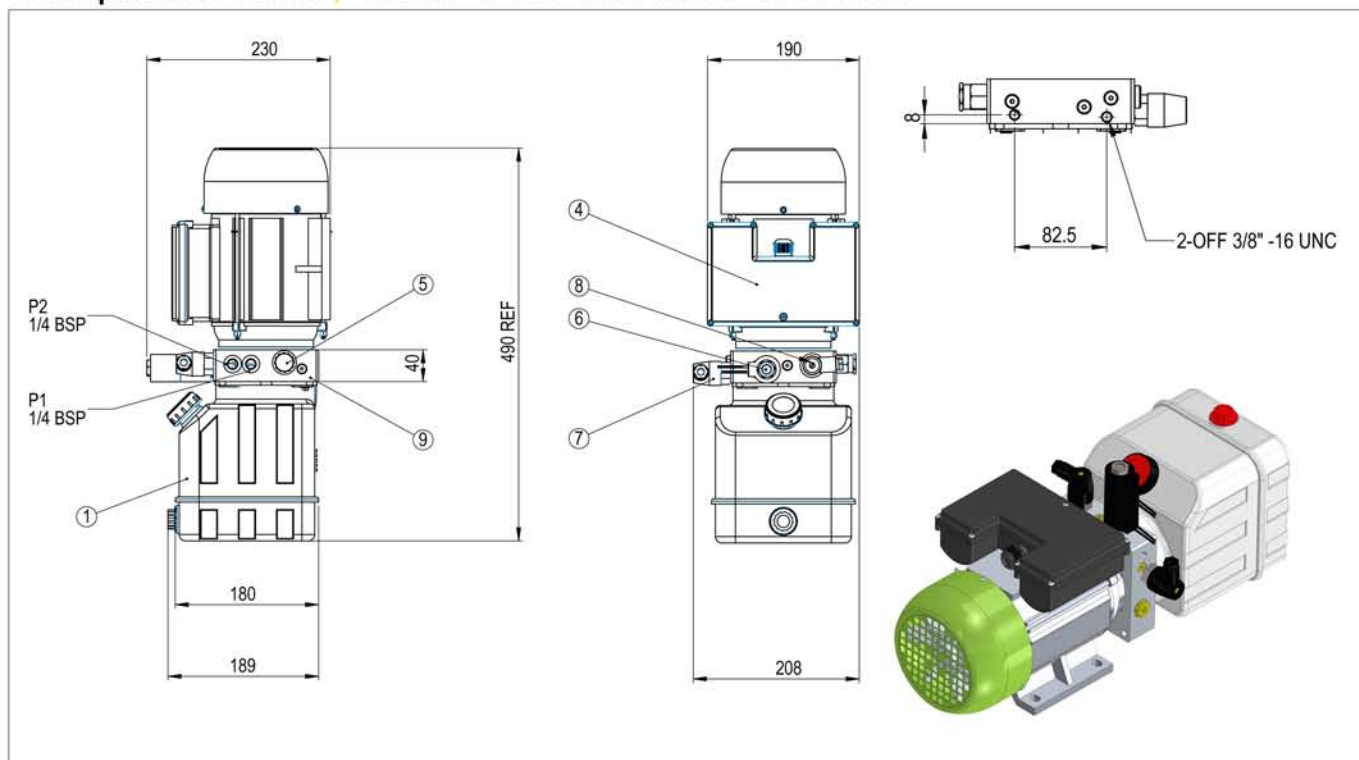
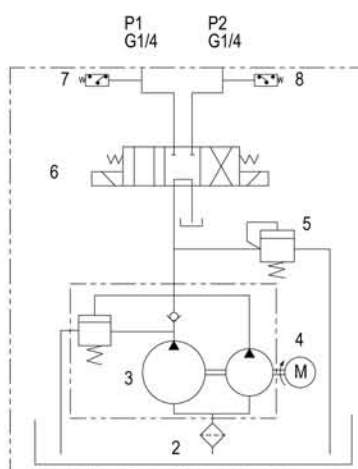


# POWER PACKS

## Compactor Pack / YBZ5-C4.2-0.8A3E4-GBVET1



Motor: 0.75Kw 1PH S1  
 Tank: 4L vertical mount  
 Pump: 6 LPM low pressure  
       1 LPM high pressure  
 Pressure Switch: P1 200 bar  
                   P2 10 bar



Comprising of a single phase S1 rated 0.75KW electric motor and a twin speed hydraulic pump along with integral double acting directional valve and two independent pressure switches. The power pack is designed to allow the compactor ram to approach the waste at full speed and then automatically engage the low speed high pressure pump when compacting the waste, as soon as max pressure is achieved the P1 pressure switch signals the retract cycle and the ram retracts at full speed until it closes when P2 pressure switch signals the end of the cycle and places the system into neutral.

**Please Note! All power packs should be wired by a qualified electrician. Please refer to wiring diagrams at the back of the power packs section.**